



**PRODUCT CODE: SH 103-C**

TRIDENT 180°GLASS TO GLASS  
HINGE SUIT 10mm square cut finish

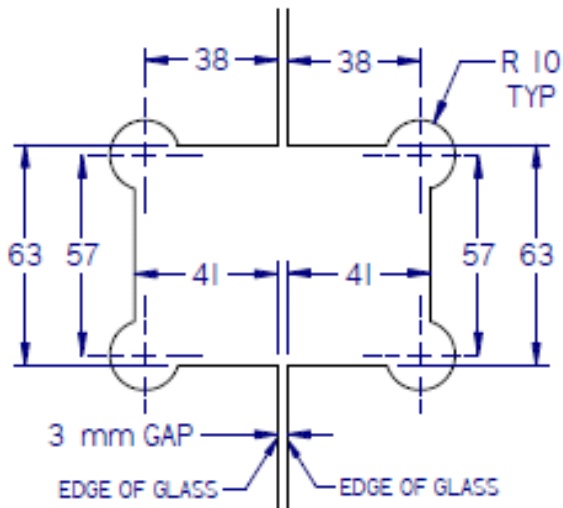
**TECHNICAL DETAILS**

Manufactured from Solid Brass with  
Stainless Steel Screws and fiber gaskets  
Available Chrome and Satin Finishes

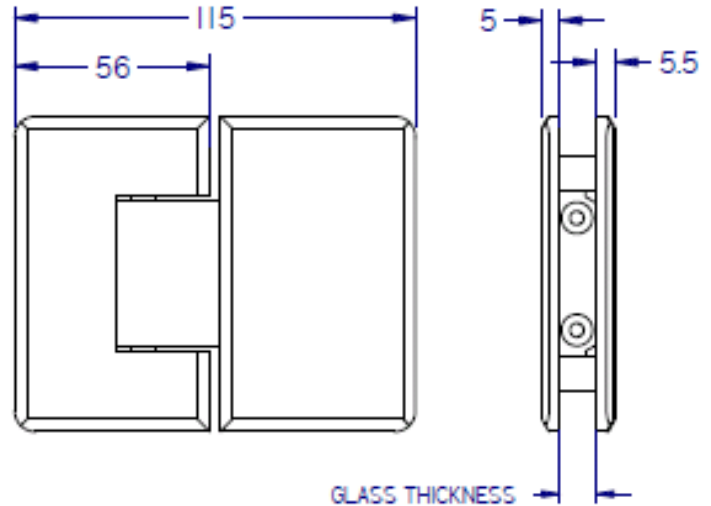
For chrome Order **TRIDENT SH 103-C**

For Satin Order **TRIDENT SH 103-SC**

**GLASS TEMPLATE**



**BASIC DIMENSIONS**



**TYPICAL APPLICATION**

